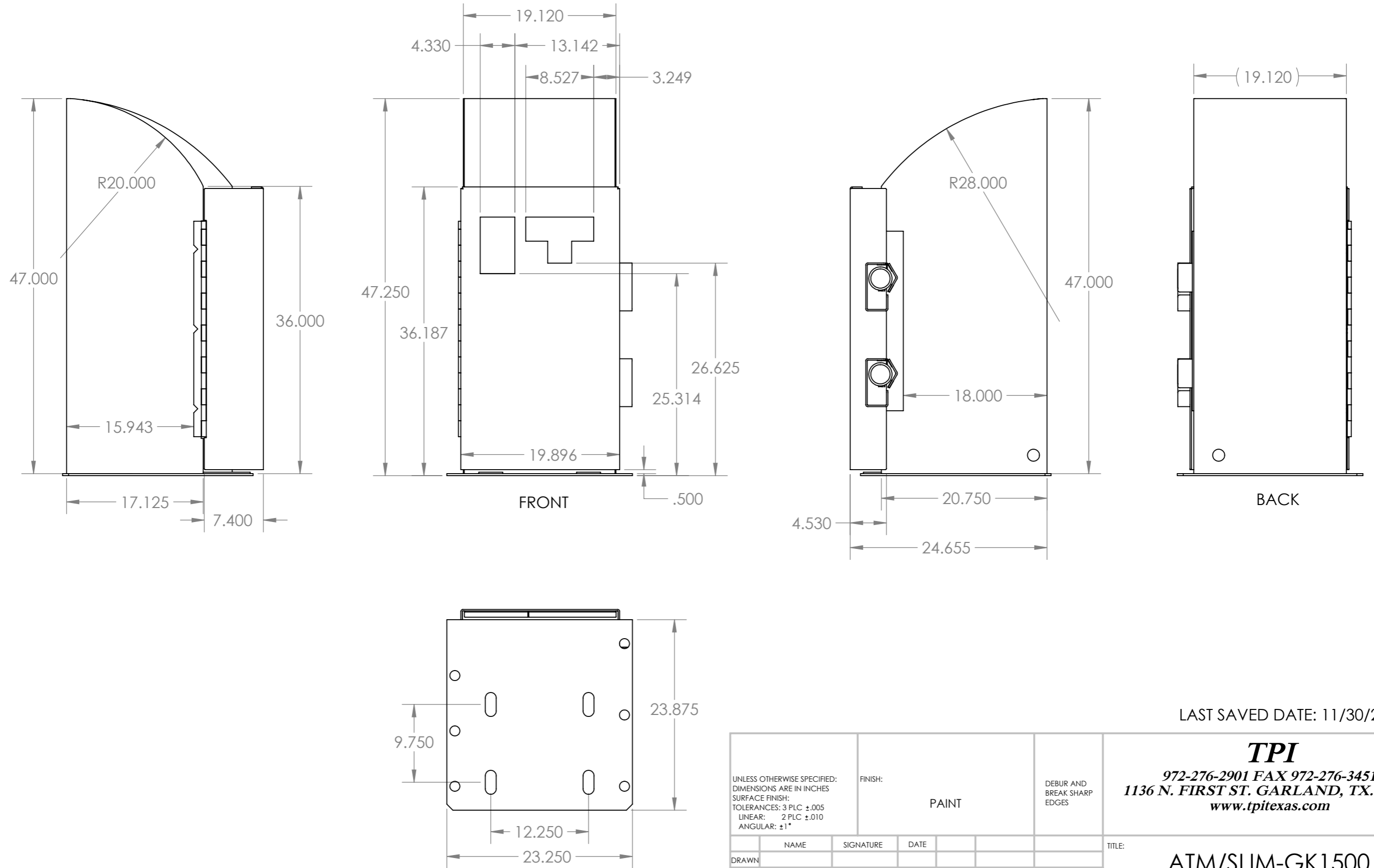


REVISION CHANGES:



LAST SAVED DATE: 11/30/2017

**TPI**  
 972-276-2901 FAX 972-276-3451  
 1136 N. FIRST ST. GARLAND, TX. 75040  
 www.tpitexas.com

UNLESS OTHERWISE SPECIFIED: DIMENSIONS ARE IN INCHES SURFACE FINISH: TOLERANCES: 3 PLC ±.005 LINEAR: 2 PLC ±.010 ANGULAR: ±1°		FINISH:  PAINT	DEBUR AND BREAK SHARP EDGES
DRAWN	NAME	SIGNATURE	DATE
CHK'D			
APPV'D			DO NOT SCALE DRAWING
MFG			SCALE:1:12
Q.A			MATERIAL:
			WEIGHT:

TITLE: <b>ATM/SLIM-GK1500 GK1500 UNIVERSAL ATM</b>	
DWG NO. SLIM-GK-1500 Universal Dimension	A3
SHEET 1 OF 1	REVISION -